

Sponsorship Opportunities 2014-2015



Dear Community Leaders,

The Bedford County Chamber Foundation is very proud to be once again offering the Youth Leadership Bedford County program to 10th grade students throughout Bedford County.

The Class of 2014 is about half-way through their class calendar, planning their project and learning about themselves and the world around them.

Recruitment has just begun among high school freshmen for the Class of 2015. The students selected for the next class will begin their journey in May 2014.

YLBC is offered to students at no charge, allowing us to provide this unique opportunity for students of all economic backgrounds. This is only made possible through generous support by our business community.

With EITC funds which support this program decreasing every year, we have developed a new sponsorship structure which we believe will benefit not only the program but also the partnering businesses.

Thank you for considering sponsorship of the YLBC program. We believe this is a valuable investment in the future of our young leaders and our county!

Sincerely,



Kellie Goodman Shaffer
Executive Director



Students meet with Judge Livengood during the Personal Accountability (Judicial) Session



Students Tour REI

TABLE OF CONTENTS

Page 4

**MISSION STATEMENT
VISION STATEMENT
KEY COMPONENTS**

Page 5

**STEERING COMMITTEE
& SESSION PLANNERS**

Page 6

A YEAR IN THE LIFE

Page 9

CLASS PROJECTS

Page 10

STUDENT THOUGHTS

Page 11

SPONSORSHIP DETAILS

Mission Statement

Youth Leadership Bedford County endows youth with the knowledge and ability to become confident servant leaders.

Vision Statement

Youth Leadership Bedford County (YLBC) offers a ten-month leadership program for a select group of Bedford County high school sophomores. The program consists of team-building activities and leadership training sessions that create an awareness of resources, services and issues specific to Bedford County. This program will become a pivotal life experience for the participants who will serve in leadership roles today and in the future.

Key Components

- To help the participants build confidence in their leadership ability
- To enhance the understanding of a leader's role in his/her community
- To create a meaningful dialog and sense of teamwork among participants and current community leaders
- To provide opportunities for students from Bedford County school districts to know one another and develop a level of mutual trust and respect
- To instill a commitment to serve our community and others
- To improve the quality of life for all in Bedford County by instilling the attributes of servant leadership.

Steering Committee & Session Planners

Kellie Goodman Shaffer, Chamber Foundation Executive Director

Dailey Chandler, White Sulphur Springs - YLBC Facilitator

Samantha Davis, Chamber/YLBC Staff Liaison

David Braddy, White Sulphur Springs

Dawn Housel, PSI - YLBC Steering Committee Co-Chair

Dr. Dan Webb, Everett Area School District - Steering Committee Co-Chair

~~~~~

Allison Breth, Everett Area School District

Dr. Beth Clark, D.O., UPMC Health System

Lori Copley, Bedford County Humane Society

Tess Crawford, Northern Bedford County School District

Julia Evans, Chestnut Ridge School District

Bill Higgins, District Attorney

Bethany Kozak, Tussey Mountain School District

Krista Maola, Bedford Area School District

Dr. Allen Sell, Bedford Area School District

Sam Shuss, Bedford County Technical Center

Jenna Speicher, HOPE for Hyndman Charter School

Lorelle Steach, PA Envirothon

Brian Swain, Real Life Church

Emily Swanseen, Northern Bedford County School District

Dante Tambelini, Everett Area School District

# A YEAR IN THE LIFE...

## **The Youth Leadership Bedford County Classes**

graduate in May, completing their year-long journey through this unique educational program. YLBC not only offers the students valuable life and leadership skills, but also gives them an incomparable view and appreciation of Bedford County.

From an orientation and overnight retreat at White Sulphur Springs to an Economic Development tour of Omni Bedford Springs, New Enterprise Stone & Lime and REI, to a cultural and historical look of the Saxton/Broadtop area, the class explores many aspects of the Bedford County region.

The “Healthy You” session provides them with a look at the vast offerings of UPMC Bedford Memorial; tours of the Bedford County Jail and Bedford County Courthouse show the class aspects of the judicial system; while the Education Session (a favorite among many students) opens their eyes to disabilities, allowing the class to spend time with peers who use a variety of educational support programs.

Additional sessions provide interviewing and public speaking experience, etiquette lessons, team building exercises and educational homework lessons.

While learning the in’s and out’s of the county through the interaction with many local business leaders, the class has also discovers Covey’s *Seven Habits of Highly Effective Teens*, as presented by program facilitator Dailey Chandler.





The class consists of 23-25 tenth grade students from high schools throughout Bedford County who are chosen through an application and interview process during the spring of their freshman year. In the summer, they take part in a three-day, two-night retreat at White Sulphur Springs during which they face a variety of physical challenges, bonding the students as classmates and friends. From there, they begin a monthly curriculum of exploring the county and the *Seven Habits*, building leadership skills as well as an appreciation of their home area.

The Bedford County Chamber Foundation has been offering the Youth Leadership Bedford County program since 2005, with the goal of helping the county's next generation develop a sense of responsibility for giving back to their community. To that end, each class has participated in a service project (see page 9). The project allows students to put the principles they've learned into practice, and shows them that they can make a difference.

When their YLBC journey comes to an end, the students take with them a wealth of experiences and hopefully a new understanding of themselves and the world around them. Youth Leadership Bedford County not only works to help develop the county's future leaders, it also aims to forge friendships and build bonds that will likely last for many years to come.

Students selected for Youth Leadership Bedford County pay nothing to be part of the class, making this unique leadership program available to students of all economic backgrounds. The program is made possible through sponsorship support and ever-declining funds through the Pennsylvania Educational Improvement Tax Credit (EITC) donations.



### **I WILL DO MORE**

I am only one, but I am one.  
I cannot do everything, but I can do something.  
And what I can do, I ought to do.  
And what I ought to do, I will do.  
I will do more than belong...I will participate.  
I will do more than care...I will help.  
I will do more than believe...I will practice.  
I will do more than be fair...I will be kind.  
I will do more than dream...I will work.  
I will do more than teach...I will inspire.  
I will do more than earn...I will enrich.  
I will do more than give...I will serve.  
I will do more than live...I will grow.  
I will do more than talk...I will act.  
I will be more than good...I will be good for something.

—William Arthur Ward



# Youth Leadership Bedford County Class Projects

## Class of 2006

Trail Work at White Sulphur Springs

## Class of 2007

24-Hour Famine for Food Bank

## Class of 2008

Fun Day for Special Olympics

## Class of 2009

Spring Fling Senior Citizen Prom

## Class of 2010

It's Your Call Marketing Project to Combat Underage Drinking

## Class of 2011

BYOB:

Bedford Youth Opposed to Buzzed Driving Educational Fair

## Class of 2012

Pass the PRIDE

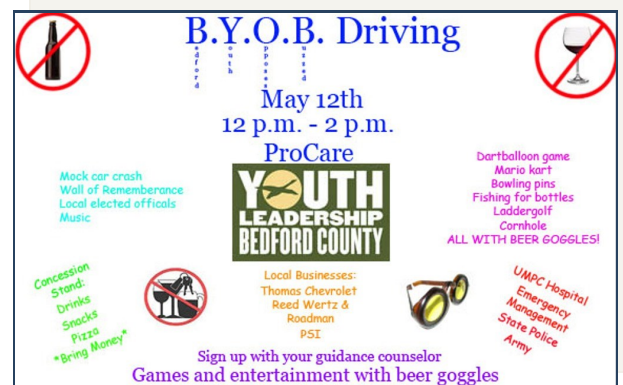
Positive Peer Pressure Facebook Campaign

## Class of 2013

Heroes Against Cancer  
Superhero themed fundraising walk

## Class of 2014

Dance Marathon to benefit  
Food Banks & Special Olympics



# STUDENT THOUGHTS

**What was the most important thing you learned through YLBC?**



*"To get things done, you need to work together."*



*"Be open-minded – celebrate diversity."*

*"To be more open and outgoing."*

*"The Seven Habits."*

*"How to work with others better."*

*"To always think positive: win-win!"*

*"How to take charge while keeping other's ideas in mind."*

*"How to interact with people better."*

*"How to better myself as a person."*

*"A leader leads by example, and that example is through service to those who choose to follow you."*

*"Dealing with other's ideas and communication skills."*

*"Follow your dreams."*

*"Be the change you wish to see in the world and lead in the direction you wish to go."*



# INVESTING IN OUR FUTURE...YLBC SPONSORSHIPS

Please check Desired Investment

## Signature Sponsoring Partnership (Exclusive) \$5,000

- \* Listed in all YLBC materials (marketing, recruitment, media, etc.) as presenting sponsor of the program (i.e. *Youth Leadership Bedford County, presented by: Your Company Here*)
- \* Company banner displayed during all YLBC sessions (featured in photos of students, etc.)
- \* Opportunity to speak to the students & their parents during orientation and graduation (5 min.)
- \* Opportunity to speak during sponsor recognition luncheon (5 min.)
- \* Company Logo/Link prominently displayed on program page of Chamber website & YLBC Social Media.
- \* Company Logo prominently featured on cover of student binders.
- \* Company Logo featured on cover of graduation program/class directory.
- \* Presenting sponsor plaque for display in your business.
- \* \$500 in Chamber marketing products as you desire to use them (email blast ads, direct mail packet, etc.)
- \* First right of refusal to renew sponsorship annually.
- \* **Value Added Option: Save 20% with a 5-year commitment (\$20,000 over 5 years, \$5000 in savings.)**

~~~~~

Sponsors may once again underwrite one or more full sponsorships of \$500 each or share a sponsorship for \$250. Students from all six Bedford County high schools (including the Hope for Hyndman Charter School) are eligible to participate in the program. Every effort will be made to match your scholarship with a student from your school district, if requested, and students will be encouraged to make a personal connection with their sponsors.

Sponsors may choose to sponsor one student per high school for a total commitment of \$3,000.

Please indicate the number of students you wish to sponsor next to the full sponsorship opportunity or check for shared.

Student Sponsor Benefits

Full Sponsorship - \$500

of Students

- Invitation to meet your student during the YLBC sessions throughout the year.
- Company or organization logo included as a sponsor in YLBC Directory & Graduation program.
- Recognition included in the YLBC graduation page in the *Bedford Gazette*.
- Recognition (logo/link) included on the YLBC page of the Chamber website.
- Recognition included in Chamber marketing, including the E-Newsletter and E-Connection.
- Invitation to sponsor recognition luncheon with the students & presentation of display plaque.
- Recognition at YLBC Graduation.

Shared Sponsorship - \$250 (As student co-sponsor)

Check Here

- Invitation to meet your student during the YLBC sessions throughout the year
- Company or organization name included YLBC Directory/Graduation program
- Recognition (listing) included on the YLBC page of the Chamber website.
- Invitation to sponsor recognition luncheon with the students & presentation of .
- Recognition at YLBC Sponsors Luncheon & graduation

Student Sponsorship Request Details (specific student, school district, etc.) _____

Sponsorship contributions are tax deductible. Checks should be made payable to the **Bedford County Chamber Foundation** (a 501-(c)(3) educational organization).

